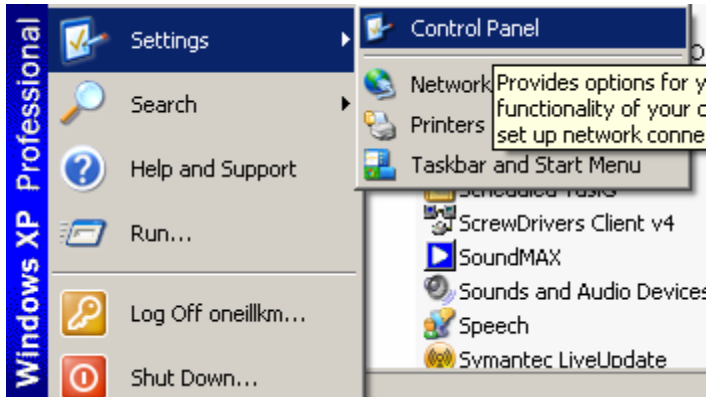


# KEVIN O'NEILL

## Japanese Characters in Desktop and SharePoint Explorer Views

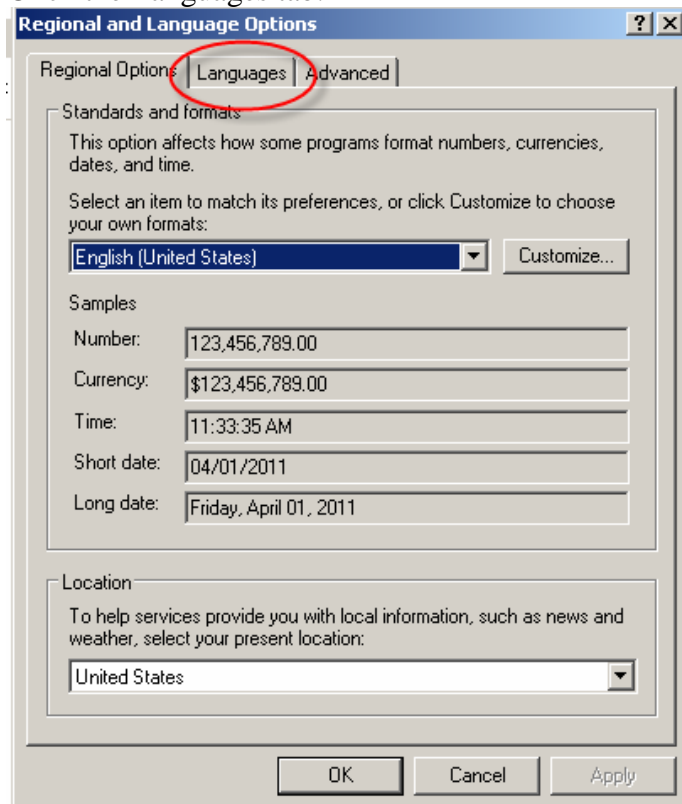
The following was done on a local desktop Windows XP so that Japanese characters could be seen when a file was on a desktop as well as viewable in SharePoint under explorer view:



Double click Regional and Language Options:

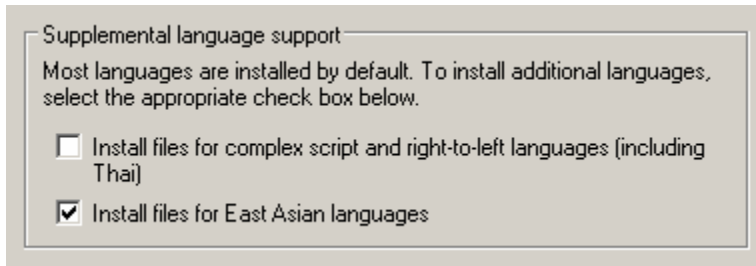


Click the Languages tab:



# KEVIN O'NEILL

Under the Supplemental language support -> select Install files for East Asian languages:



Supplemental language support

Most languages are installed by default. To install additional languages, select the appropriate check box below.

Install files for complex script and right-to-left languages (including Thai)

Install files for East Asian languages

The PC will update some files – then prompt for a reboot. Once rebooted then files can be downloaded to a desktop or can be viewed in explorer view of SharePoint with the character sets intact. In SharePoints case – explorer view uses the native desktop functionality available.

#### **Additional Sites for Reference:**

[http://newton.uor.edu/Departments%26Programs/AsianStudiesDept/Language/asianlanguageinstallation\\_XP.html](http://newton.uor.edu/Departments%26Programs/AsianStudiesDept/Language/asianlanguageinstallation_XP.html)

This was installed as well but appears was not needed:

<http://www.microsoft.com/downloads/en/confirmation.aspx?FamilyID=24A66277-CD9F-4332-A6F1-52B85A6470BD&displaylang=EN>